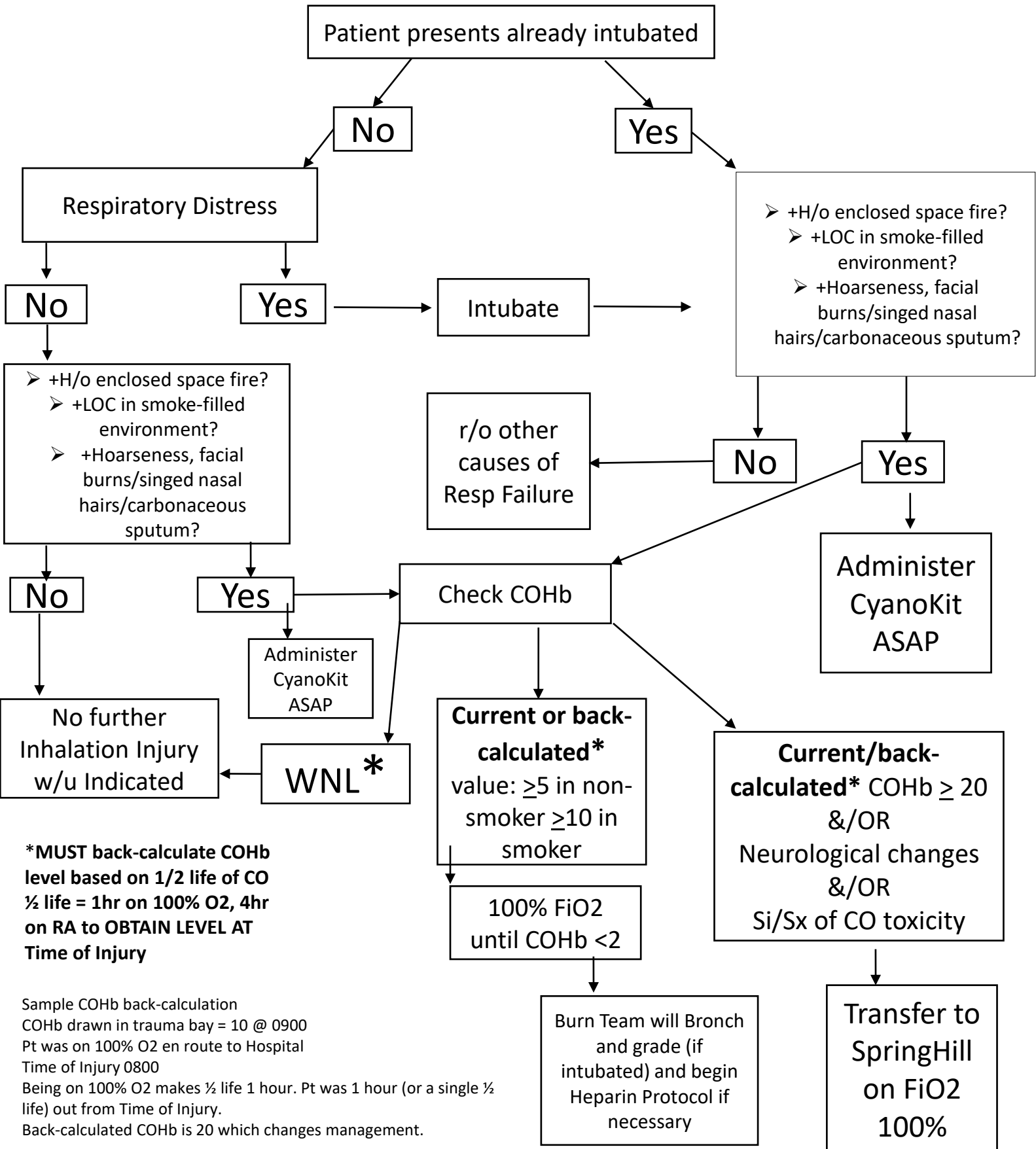


# Isolated Inhalation Injury Protocol

University of South Alabama Burn Center

## For patients **WITHOUT** burns but Inhalation Injury: Straight to SpringHill for HBO



**\*MUST back-calculate COHb level based on 1/2 life of CO**  
 ½ life = 1hr on 100% O2, 4hr on RA to OBTAIN LEVEL AT Time of Injury

Sample COHb back-calculation  
 COHb drawn in trauma bay = 10 @ 0900  
 Pt was on 100% O2 en route to Hospital  
 Time of Injury 0800  
 Being on 100% O2 makes ½ life 1 hour. Pt was 1 hour (or a single ½ life) out from Time of Injury.  
 Back-calculated COHb is 20 which changes management.