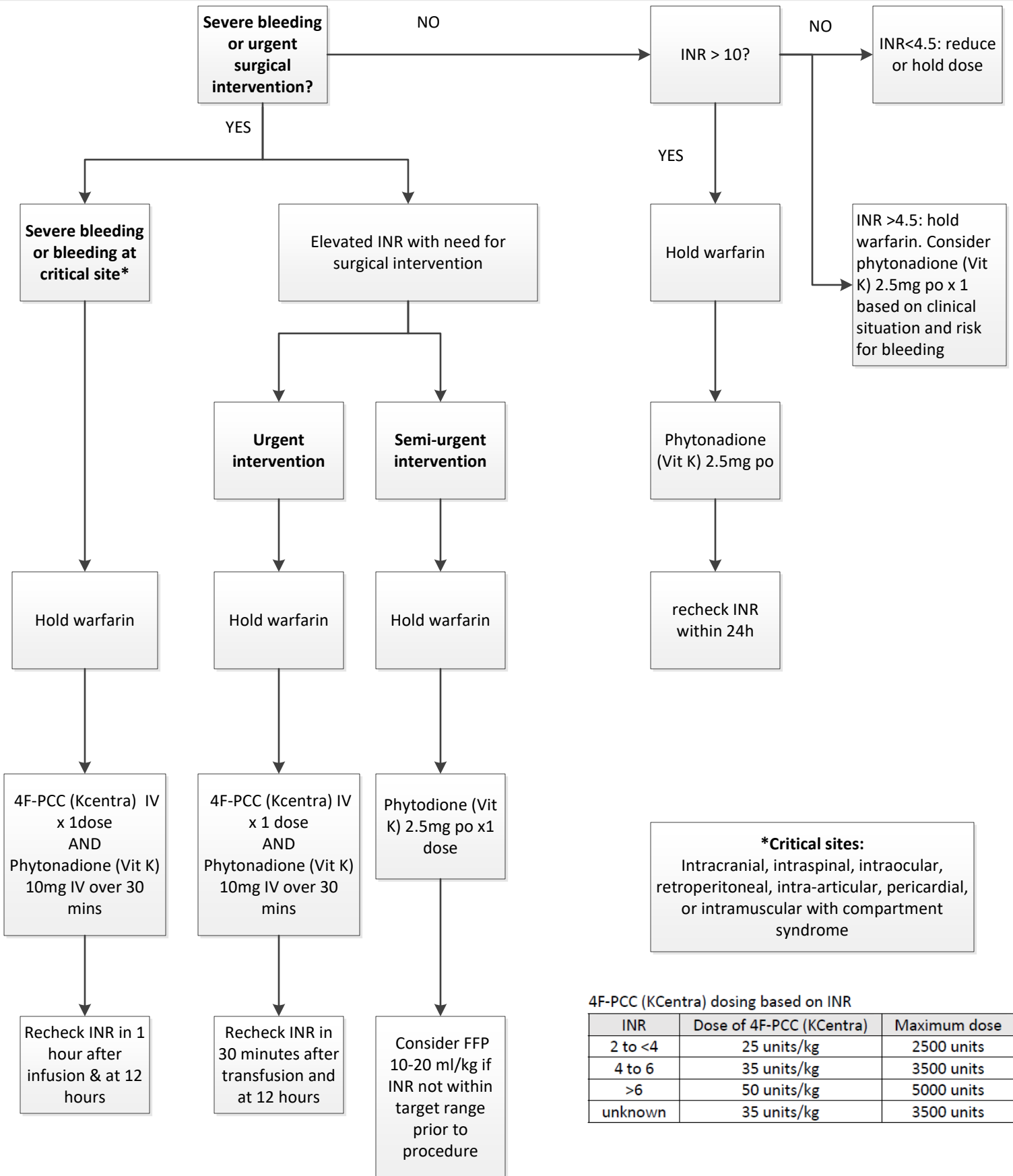


Reversal of Anticoagulation for Trauma, Surgery, or Acute Hemorrhage

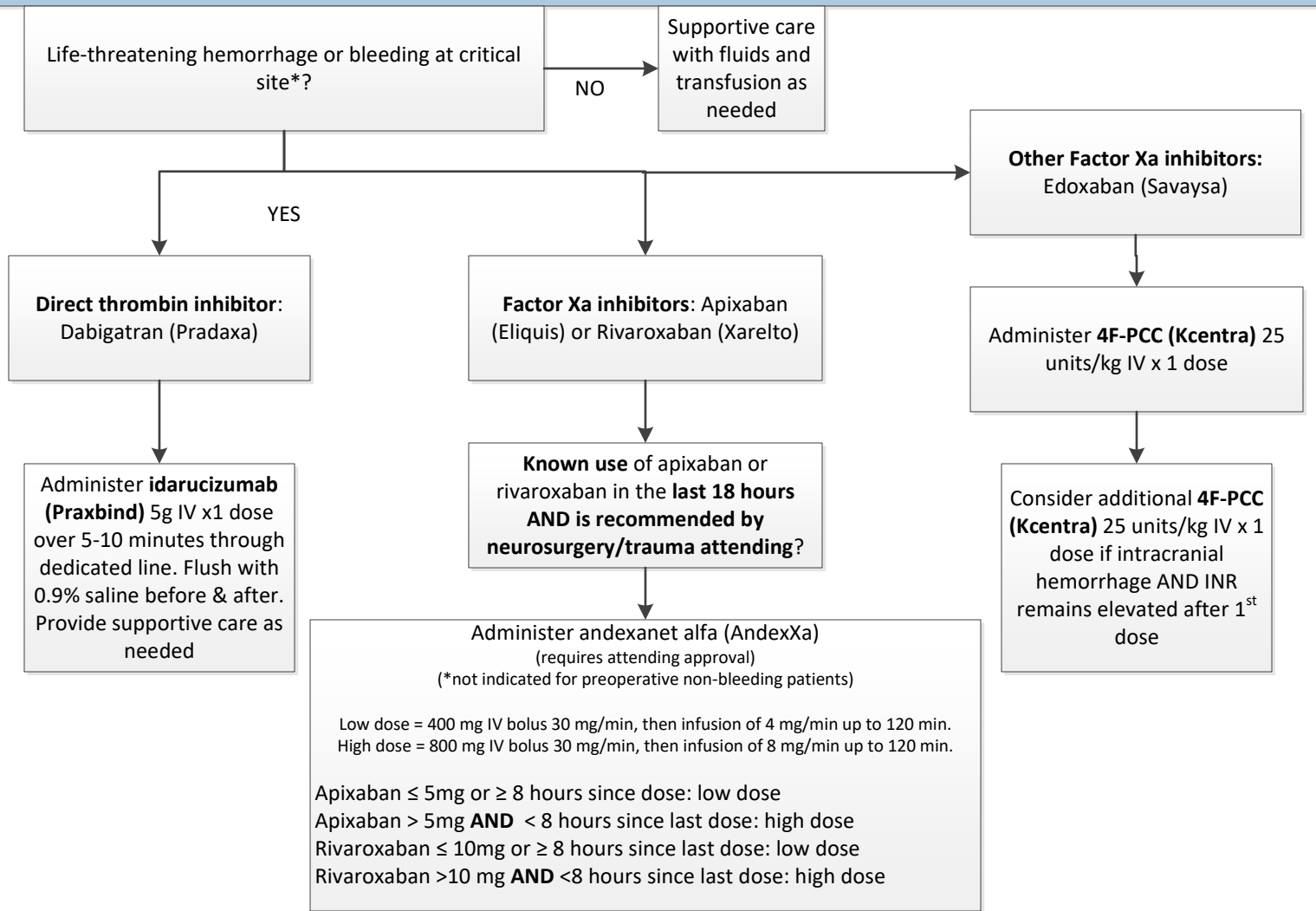
Management of Warfarin-related elevated INR and/or bleeding



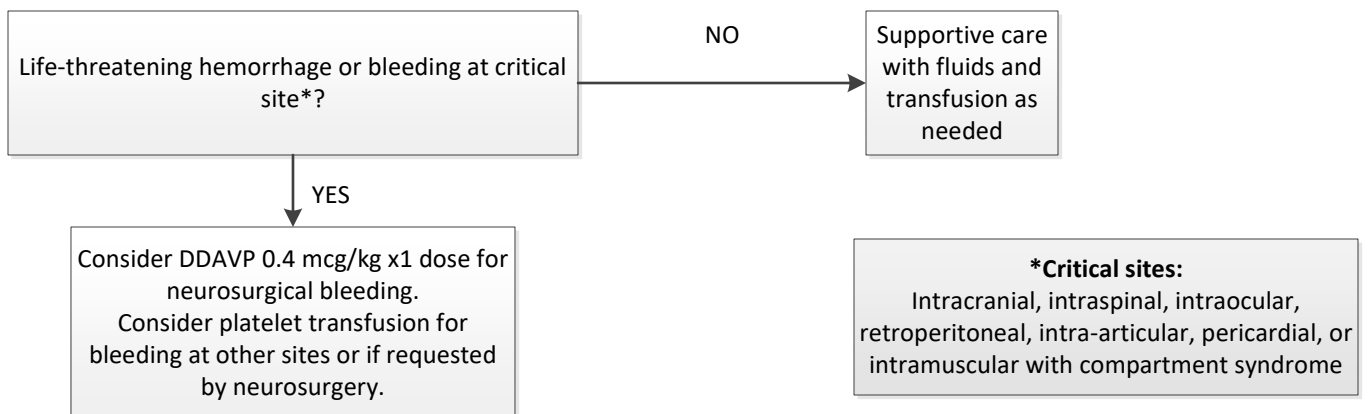
4F-PCC (KCentra) dosing based on INR

INR	Dose of 4F-PCC (KCentra)	Maximum dose
2 to <4	25 units/kg	2500 units
4 to 6	35 units/kg	3500 units
>6	50 units/kg	5000 units
unknown	35 units/kg	3500 units

Direct Oral Anticoagulant (DOAC) Reversal Guidelines for Life-threatening Bleeding



Reversal Guidelines for Antiplatelet Agents: Aspirin, Clopidogrel (Plavix), Prasugrel (Effient), Dipyridamole, Ticagrelor (Brilenta), Cilostazol



References:

1. Frontera JA, Lewin JJ, Rabinstein AA, et al. Guideline for reversal of antithrombotics in intracranial hemorrhage. *Nuerocrit Care*. 2016;24:6-46.
2. Levi M, Eerenberg E, Kamphuisen PW. Bleeding risk and reversal strategies for old and new anticoagulants and antiplatelet agents. *J Thromb Haemost*. 2011;9:1705-1712.
3. MUSC Health Emergent Anticoagulation Reversal Guideline. Medical University of South Carolina. February 2016. Available at http://academicdepartments.musc.edu/pharmacy_services/medusepol/pdf/anticoagreversal.pdf.